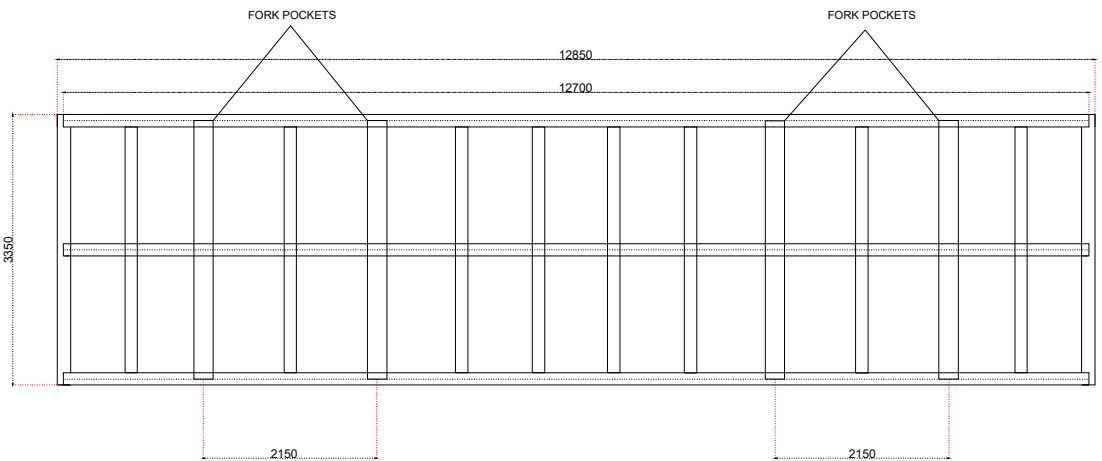
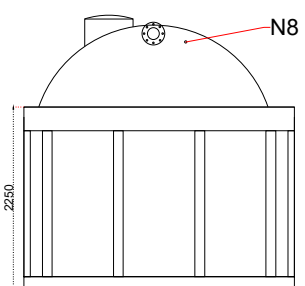


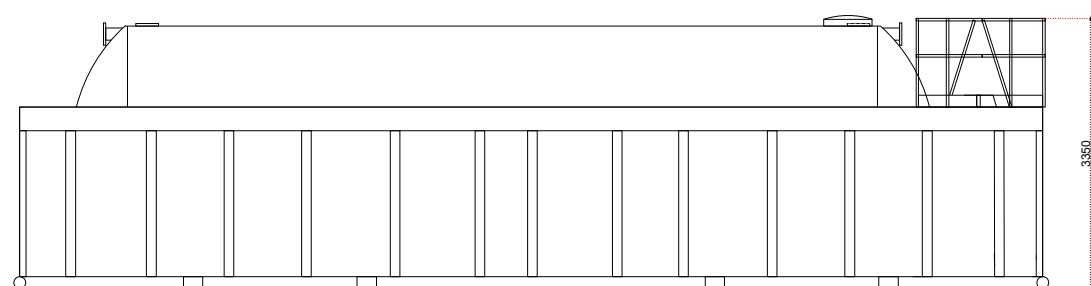
N1	6" ansi 150 flanged fill nozzle
N2	6" ansi 150 flanged outlet nozzle
N3	6" ansi 150 flanged nozzle
N4	8" ansi 150 flanged vent
N5	6" ansi 150 flanged nozzle
N6	6" ansi 150 flanged nozzle
N7	6" ansi 150 flanged nozzle (bottom)
N8	1" bsp threaded sockets (back of tank)
N9	600mm quick release manway



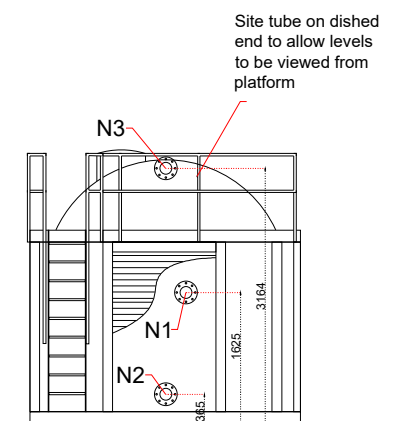
BASE VIEW - SKID



END VIEW

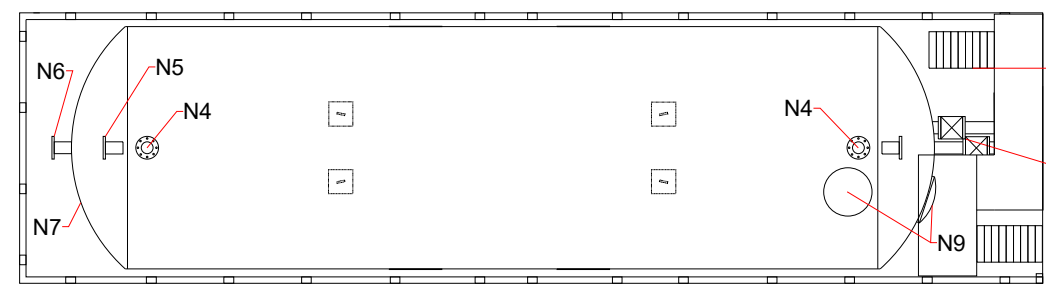


ELEVATION VIEW



END VIEW

Site tube on dished end to allow levels to be viewed from platform



VIEW ON TOP OF TANK

Access onto platform and into bund via steps

6" Gate valve fitted to fill and outlet lines, these can be operated from handles positioned on the gantry

GROUND LOADING DETAILS	
Total weight of the tank when full is 90,000 kgs based on a liquid with an sg of 1.	
Total surface area on the ground of 12.14m ²	
This gives a total force per square area of 0.74kg/cm ² - 7.26N/cm ²	

TANK TYPE	Horizontal Bunded tank
CAPACITY	70,000L
WEIGHT	20,000 KG
M.O.C	Carbon Steel
MAX. WORKING TEMP	70 °C
DESIGN PRESSURE	Atmospheric
INTERNAL LINING	None
REVISION NUMBER	R-3
ISSUE DATE	23-05-2023

Regal Tanks,
Benzene Road,
Beaconsfield,
Suffolk,
NR34 7XD

Tel: 01502 710100
E-mail: info@regaltanks.co.uk
Web: www.regaltanks.co.uk

www.REGALTANKS.co.uk
Industrial Storage Tanks