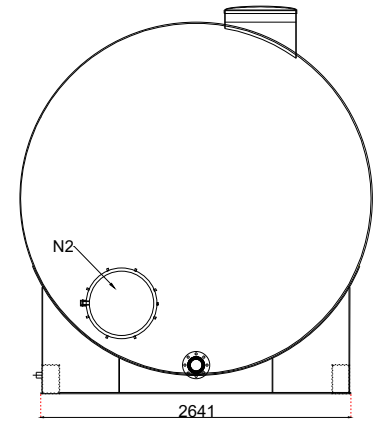
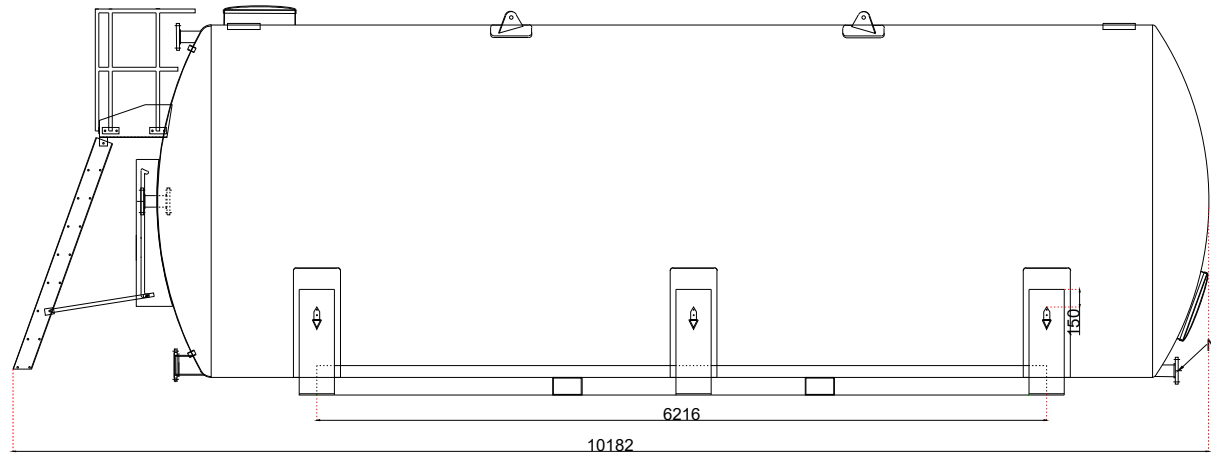
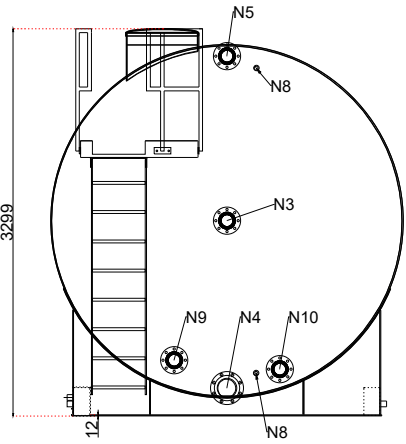
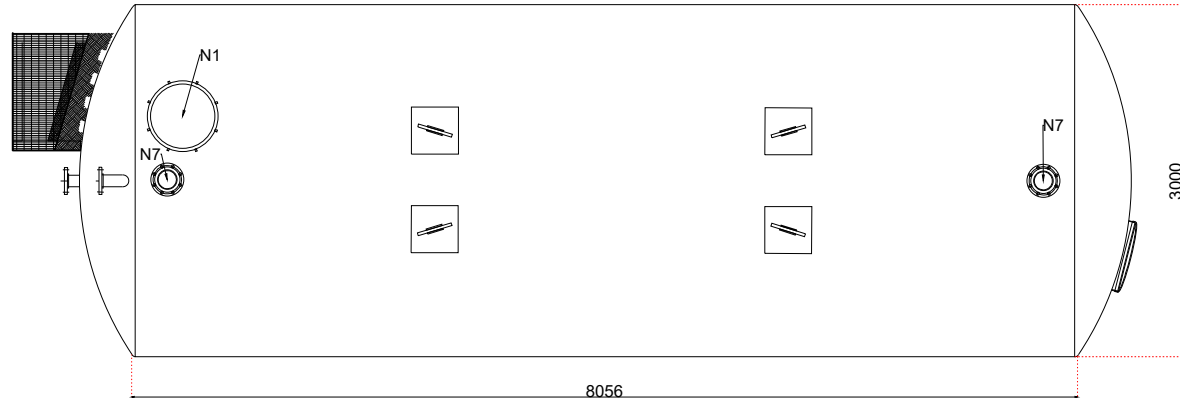



N1	1	600NB	QUICK RELEASE MANWAY
N2	1	600NB	QUICK RELEASE MANWAY
N3	1	100NB	ASA150 flanged nozzle
N4	1	100NB	ASA150 flanged nozzle
N5	1	100NB	ASA150 flanged nozzle
N6	1	150NB	ASA150 flanged nozzle
N7	2	150NB	ASA150 flanged nozzle
N8	1	25NB	SIGHT TUBE
N9	1	100NB	ASA150 flanged nozzle
N10	1	100NB	ASA150 flanged nozzle



GROUND LOADING DETAILS	
Surface area touching the ground =	5.136m ²
total weight when full with liquid with s.g of 1 =	68,200kgs
ground loading =	1.33kg/cm ² - 13.04 n/cm ²

TANK TYPE	Horizontal storage tank	Regal Tanks, Benacre Road, Beccles, Suffolk, NR34 7XD Tel: 01502 710100 E-mail: info@regaltanks.co.uk Web: www.regaltanks.co.uk  www.REGALTANKS.co.uk Industrial Storage Tanks
CAPACITY	60,000L	
WEIGHT	8,200 KG	
M.O.C	Carbon Steel	
MAX. WORKING TEMP	70 °C	
DESIGN PRESSURE	Atmospheric	
INTERNAL LINING	None	
REVISION NUMBER	R-5	
ISSUE DATE	10-03-2021	